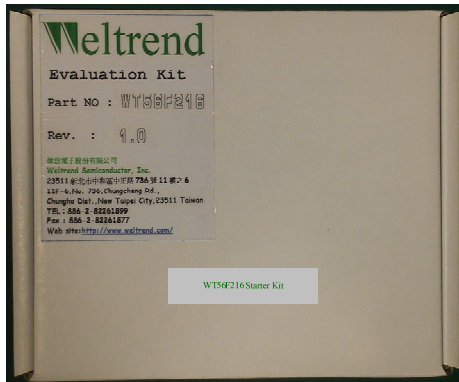


# WT56F216 Starter Kit Quick Start Guide

## 1. Kit Contents



- 1 x WT56F216 Evaluation Board.
- 1 x WLINK-SWUT Adapter.
- 1 x CD ROM.

## 2. Getting Started

The WT56F216 Starter Kit can be used as a development platform for general-purpose MCU applications.

The WLINK-SWUT adapter is required to program and debug software running on the WT56F216.

This Quick Start Guide will explain how to use the WT56F216 EVB and WLINK-SWUT adapter with WLINK-SWUT ICE / ISP and the next steps for your own software development.

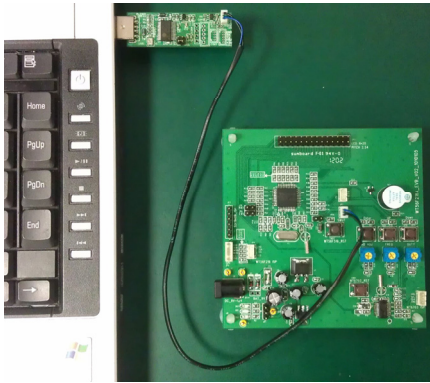
## 3. Installing the Driver

Before plugging WLINK-SWUT adapter into the PC, please install WLINK-SWUT's driver. When installing the driver, you will also automatically install USB driver required for proper communication between the WLINK-SWUT adapter and the WLINK-SWUT ISP/ICE program.

- The WLINK-SWUT adapter driver can be downloaded from [WWW.weltrend.com.tw/](http://WWW.weltrend.com.tw/)

## 4. Inserting the WLINK-SWUT Adapter

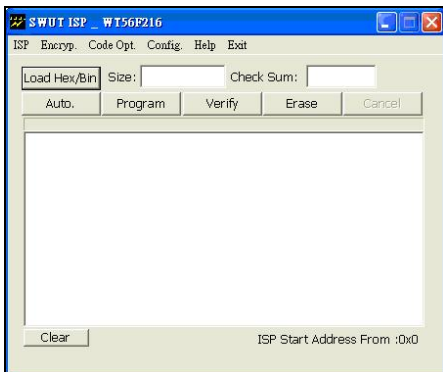
When inserting the WLINK-SWUT adapter into a USB slot, Windows will automatically install and wait for the driver installation to complete. After installation, the WLINK-SWUT is ready for use.



- The WLINK-SWUT Adapter Install manual can be downloaded from [WWW.weltrend.com.tw/](http://WWW.weltrend.com.tw/)

## 5. WLINK-SWUT ISP (In System Programmer)

Weltrend has a simple tool which can be used to program the flash on the WT56F216.

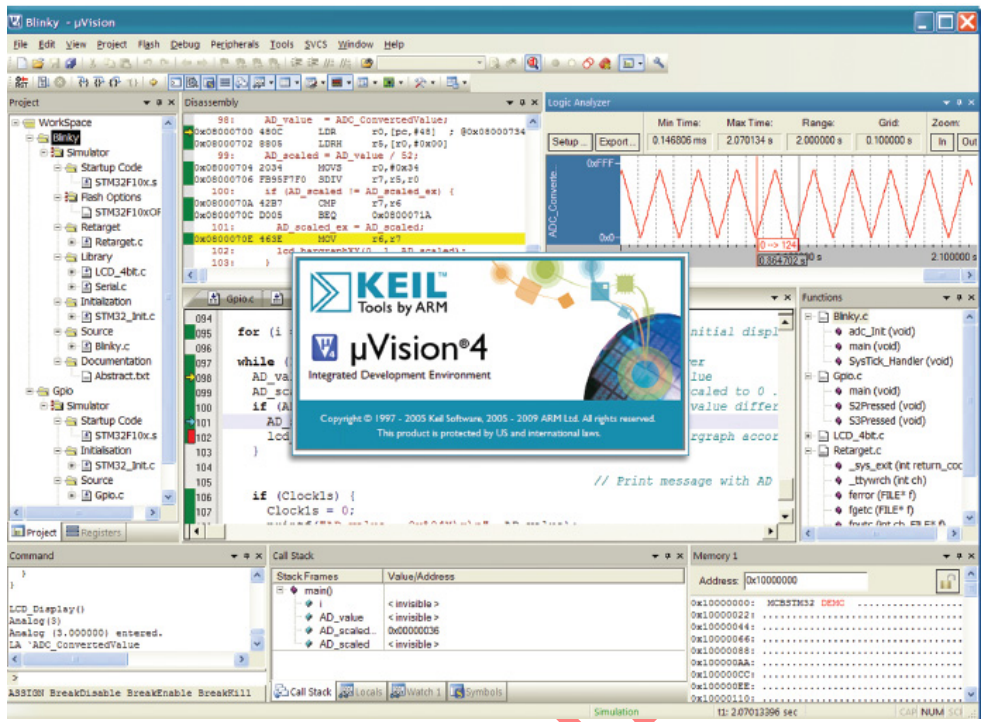


The Flash Programmer application, available on the web, can be used to program Intel HEX files, read the contents of flash and several other operations.

- The SWUT\_ISP program can be downloaded from [WWW.weltrend.com.tw/](http://WWW.weltrend.com.tw/)
- The SWUT\_ISP Operation Manual can be downloaded from [WWW.weltrend.com.tw/](http://WWW.weltrend.com.tw/)

## 6. Keil uVision IDE (WLINK-SWUT ICE)

To develop software and debug the WT56F216, you should use KEIL uVision IDE for 8051 and the AGDI third-party interface for WLINK-SWUT ICE (In Circuit Emulator).



**AGDI** is an Application Program Interface (API) third-party developers can use to create hardware debugger drivers that interface directly with the Keil uVision Debugger. The purpose of AGDI is to provide a way to interface the Keil Debugger user-interface to a third-party's hardware debugging interface.

A free, code size limited version can be downloaded from the web. See <http://www.keil.com/uvision/>

- The WLINK-SWUT ICE Install manual can be downloaded from [WWW.weltrend.com.tw/](http://WWW.weltrend.com.tw/)